

Rogers Historical Museum



Field Trip Guide



Welcome to the Rogers Historical Museum!

The Rogers Historical Museum is a fun and exciting place to take a field trip. The museum is full of historical objects from our area's past, everything from an early 1900s wagon to a concrete chair from the Monte Ne Amphitheatre. Every item tells a story about the individuals that made Rogers and Northwest Arkansas what it is today.

While visiting, you and your students will be immersed in history through lessons, hands-on objects, fun activities, and tours of the galleries.

This Field Trip Guide will help you prepare for your visit and ensure that you and your students have a quality experience.

Table of Contents

About Us.....	3-7
>RHM Mission.....	3
>Fun Facts.....	4
>Benefits of a Field Trip.....	5
>Restrooms & Handicap Access.....	6
>Gallery Map.....	7
Preparing for your Visit.....	8-19
>RHM Bus Drop Off & Parking Map.....	9
>Rocky Branch Bus Drop Off & Parking Map.....	10
>Field Trip Expectations.....	11-13
>>Rogers Historical Museum.....	11
>>Rocky Branch Schoolhouse.....	12-13
>Typical Field Trip Schedules.....	14-19
>>Key Wing & Hailey Bldgs.....	14-15
>>Rocky Branch.....	16-19
Thank You.....	20
Field Trip Notes.....	21-23

Please take the time to read over this packet prior to your visit. If you have any questions, please email Education Manager Ashley Sayers at **asayers@rogersar.gov**.



About Us

Rogers Historical Museum Mission

Our mission is to enrich lives through education, experience, and exploration of our heritage. We fulfill that mission through:

- *Collecting and preserving artifacts, archival materials, and research materials which document the history and cultural heritage of Rogers and Benton County
- *Offering exhibitions, programs, publications, and web-based resources which foster an appreciation of our region's heritage and enable area residents to create a better future for themselves, their families, and their communities
- *Offering family-friendly exhibitions and programs which allow people of all ages to engage the past, imagine the future, and find joy in learning
- *Offering loan exhibitions and related programs which broaden the cultural horizons of area residents and help place our region's natural and cultural heritage in a broader context.

The Rogers Historical Museum is a department of the City of Rogers and is supported by two non-profit organizations: The Rogers Museum Foundation and the Friends of the Rogers Historical Museum. It is also governed by a five member commission that is appointed by the mayor and approved by the city council.

About Us, continued

Fun Facts

- *On October 25th, 1975 the Rogers Historical Museum opened its doors in a former bank building on First Street that was constructed in 1905.
- *In 1982, the museum relocated to the Hawkins House on the corner of Second and Cherry Streets.
- *In December 1986 the groundbreaking of the Key Wing around the Hawkins House took place and on December 5th, 1987 the museum reopened.
- *In 2015 the historic Newt Hailey Ford Dealership building was purchased by the City of Rogers for the museum's expansion project.
- *On December 13th, 2018 the Rogers Historical Museum reopened in the renovated Hailey Building.



About Us, continued

Benefits of a Field Trip to the Rogers Historical Museum

Children attending a field trip to the Rogers Historical Museum will:

- *Handle real artifacts and high quality replicas
- *Develop critical thinking skills such as problem solving, inquiry, observation, and empathy
- *Acquire new knowledge, understanding, and skills



- *Experience a positive perception of and attitude toward museums
- *Gain social benefits (e.g., team working, meeting other adults)
- *Have the opportunity to participate actively as citizens and develop social skills with other people outside of the school environment
- *Exhibit enjoyment and creativity and become inspired



About Us, continued

Restrooms and Handicap Accessibility

Museum Main Campus

All of our public museum buildings have been upgraded with restroom facilities that include handicap accessible rooms to accommodate field trips and other public events. The building entrances are American and Disability Act compliant with ramps, door push buttons, wider entry points, and multiple emergency exits.

Rocky Branch One-Room Schoolhouse

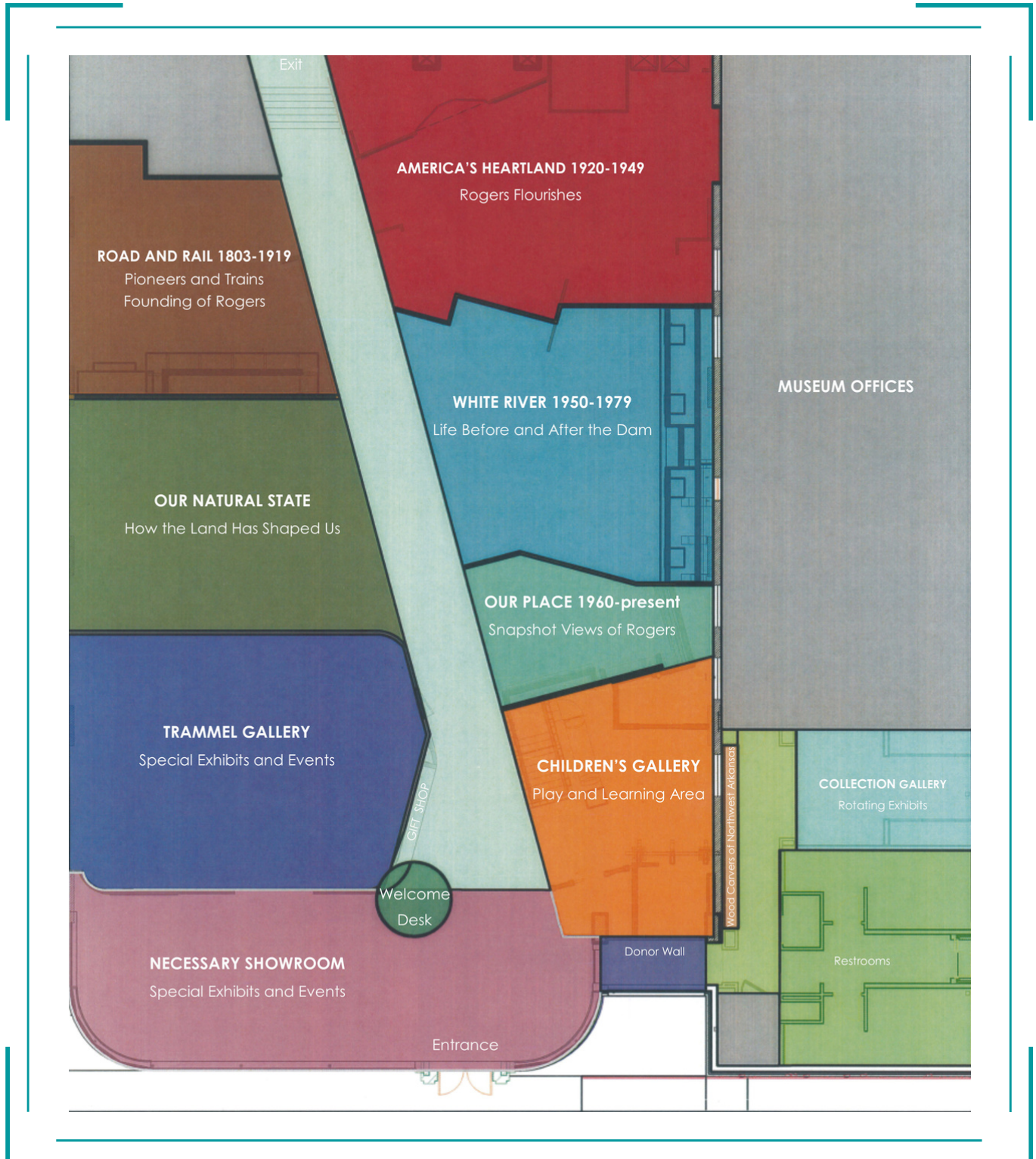
The historic Rocky Branch One-Room Schoolhouse is on the National Register of Historic Places and has **no wheelchair accessibility**. However, every possible means will be undertaken to accommodate all visitors inside the schoolhouse. Please contact us so accommodations can be worked out in advance of your visit so we can make this fun and enjoyable for everyone.



About Us, continued

Gallery Map

Below you will find the map of the galleries located at the Hailey Building, the main museum building.



Preparing for Your Visit

Field trip programs can vary based on the amount of students, time of arrival, time of departure, or other requirements noted at the time of booking. Typically, all field trip programs begin at 9am and last 2-3 hours, with the exception of the Rocky Branch One-Room Schoolhouse program, which lasts 4.5 hours.

Safety cancellation note: Museum programs may be cancelled for the safety of students, teachers, volunteers, and museum staff due to the following conditions:

- *Rain, snow, ice, wind, lightning, extreme temperatures, or any other weather condition that's ongoing, predicted, has an issued warning, or is a detriment to the safety of the visitors and staff.
- *Construction areas of downtown businesses, streets, utilities, parks, or other obstructed paths that make the safety of the program impossible to maintain.

Please **reserve your field trip at least two weeks in advance** as all of our programs are popular and spots fill up fast.

Please arrive 10-15 minutes early to allow for time to unload the students from the buses and to get them settled in for the program. **See the following maps for bus drop off location.**

If you need to **cancel**, please do so at least one week before your scheduled visit.

Preparing for Your Visit, continued

Rogers Historical Museum Bus Drop Off and Parking Map

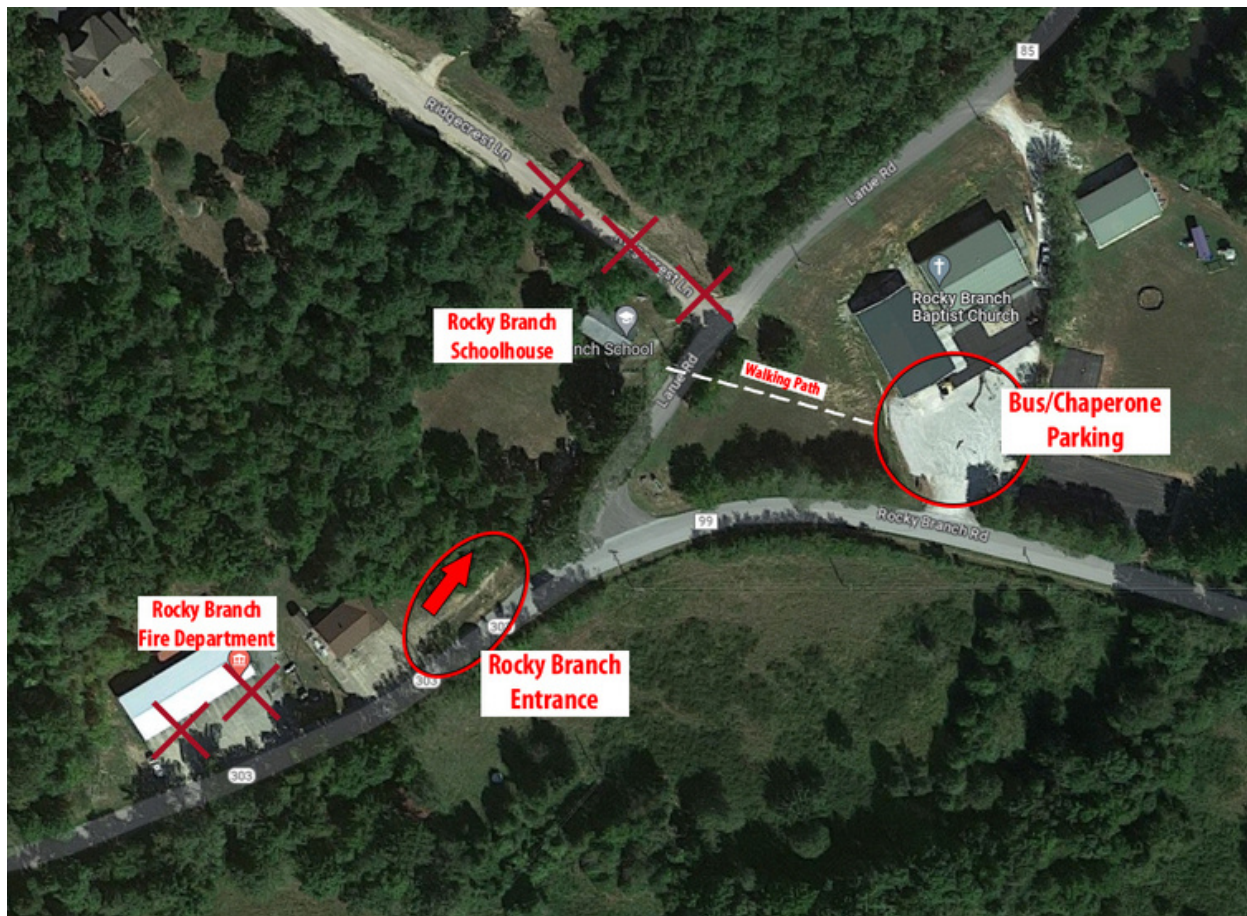
Buses will need to unload/load and park at the gravel municipal lot on Second & Cherry Streets. **Buses are not permitted to unload/load and park on the street in front of the museum.** Chaperones can park in the parking spots on Cherry Street. If those are full, they can also use the museum parking lot located next to the museum at Second & Cherry Streets.



Preparing for Your Visit, continued

Rocky Branch One-Room Schoolhouse Bus Drop Off and Parking Map

Buses will need to unload/load and park at the Rocky Branch Baptist Church that is located just down the hill from the school. Buses can also unload/load in the uphill driveway to the Rocky Branch Schoolhouse & then park at the Rocky Branch Baptist Church parking lot. **Buses are not permitted to unload/load and park on the street next to the Rocky Branch One-Room Schoolhouse or in front of the Rocky Branch Fire Department.** Chaperones will need to park at the Rocky Branch Baptist Church.



Preparing for Your Visit, continued

Field Trip Expectations–Rogers Historical Museum

To ensure a quality visit and experience at the Rogers Historical Museum , please follow the listed guidelines:

- 1) The historic Hawkins House allows for a **maximum of 10 visitors** per tour and is a **no touch** area.
- 2) Please provide **1** chaperone for every **10** students per class.
- 3) Classroom rosters will need to be provided to museum education staff upon request so name tags can be made for each student in attendance. This will help museum staff interact with students in a more meaningful way during field trips.
- 4) Multiple class groups on guided tours of the galleries will need to be divided to allow enough space for the students to explore and learn from the panels, interactives, and artifacts. Please do not move your group or allow the students to move on their own to another exhibit area or switch groups. A staff member will keep track of the rotation time and schedule in the exhibits.
- 5) Please keep voices at a gentle conversation level in the galleries.
- 6) Galleries may include interactives that provide visitors with hands-on learning experiences. Please use them gently and for the purpose they were intended. Students who use them in other ways will not be allowed to touch anymore objects and interactives in the museum.
- 7) The Key Wing Education Center and Hailey Building allow for a **minimum of 20 students and a maximum of 54 students** per field trip. If you have more students than that, field trips will need to be split into multiple days.
- 8) Parents who attend a field trip to the Rogers Historical Museum have free admission in addition to the students and teachers.

Preparing for Your Visit, continued

Field Trip Expectations-Rocky Branch One-Room Schoolhouse

To ensure a quality visit and experience at the Rocky Branch One-Room Schoolhouse , please follow the listed guidelines:

- 1) Please provide **1** chaperone for every **10** students per class.
- 2) Classroom rosters will need to be provided to museum education staff upon request so name tags can be made for each student in attendance. This will help museum staff interact with students in a more meaningful way during field trips.
- 3) The visiting classes to the Rocky Branch One-Room Schoolhouse will be responsible for removing their accumulated trash from the site at the end of the field trip.
- 4) For the Rocky Branch One-Room Schoolhouse field trip, students are encouraged to wear costumes and accessories to fit the 1905 one-room schoolhouse theme. (e.g., overalls, dresses, straw hats, bonnets)
- 5) Portions of the Rocky Branch One-Room Schoolhouse field trip will be outside, so tick spray and sunscreen are recommended.
- 6) At the Rocky Branch One-Room Schoolhouse, museum educators encourage students to volunteer during the lessons. When volunteers are called for, we ask that you allow museum staff to choose students to volunteer for tasks.

Preparing for Your Visit, continued

Field Trip Expectations–Rocky Branch One Room Schoolhouse, continued

- 7) When at the Rocky Branch One-Room Schoolhouse, if the school bus parks at the church below the schoolhouse and drops students/teachers off there, **for your safety do not walk the students up to the schoolhouse in the road.** Instead, walk up the grassy hill.
- 8) The historic Rocky Branch One-Room Schoolhouse allows for a **minimum of 20 students and a maximum of 54 students** per field trip. If you have more students than that, field trips will need to be split into multiple days.
- 9) Parents who attend a field trip to the Rocky Branch One-Room Schoolhouse have free admission in addition to the students and teachers.



Preparing for Your Visit, continued

Typical Field Trip Schedule-Key Wing & Hailey Buildings

While field trips can be tailored to fit the wants/needs of the classes visiting, below you will find a typical field trip schedule for a visit to the Museum's Key Wing Education Center and Hailey Building. Depending on the number of classes in attendance, they may need to be divided between the buildings due to space restrictions. Classes will be organized into color groups to help keep things orderly and flowing well during their visit. This will be reflected in the schedule sent to the teachers, the cones we will line students in front of at the museum, and the shelves student lunches/water bottles will be placed on, if applicable.

9:00am

*Arrive and unload at the municipal lot at Second & Cherry streets

*Line up in front of cones at 322 S. Second Street (Key Wing Education Center)

*Greeted by education staff

*Led inside where coats and lunches/water bottles will be stored

*Seats taken

9:15am

*Program begins

10:00am

*Program ends

*Stretch break

10:10am

*Activities, Round 1 begins



Preparing for Your Visit, continued

Typical Field Trip Schedule-Key Wing & Hailey Buildings, cont.

10:30am

*Activities, Round 1 ends

*Bathroom break

*Classes switch

10:40am

*Activities, Round 2 begins

11:00am

*Activities, Round 2 ends

11:10am-11:40am

*Lunch (can be in the Key Wing Education Center classroom or outside on the Hawkins House lawn or at the Railyard Park along First Street, weather permitting)

11:40am-12:00pm

*Final bathroom break

*Clean up from lunch

*Students gather lunch boxes/water bottles, coats

*Students line up and load onto bus

*Students depart

Preparing for Your Visit, continued

Typical Field Trip Schedule-Rocky Branch One-Room

Schoolhouse

The Rocky Branch One-Room Schoolhouse program is available **April-May and September-October**. Upon arrival/departure, school buses can unload/load in the driveway that leads up to the school or in the Rocky Branch Baptist Church parking lot that is down the hill from the schoolhouse. Below is the address of Rocky Branch One-Room Schoolhouse, as well as the GPS coordinates and directions to the school from Downtown Rogers.

Address:

8145 Larue Road
Rogers, AR 72756

GPS Coordinates:

36.326097, -93.941426

Directions:

From Downtown Rogers take Highway 12 East (approximately 10 miles) to Highway 303 North. Go approximately 3 miles. At the "Y" intersection, the schoolhouse will be on the left. Busses and parents need to park in the Rocky Branch Baptist Church parking lot.

On the following pages you will find a typical schedule for a day at the Rocky Branch One-Room Schoolhouse.

Preparing for Your Visit, continued

Typical Field Trip Schedule-Rocky Branch One-Room

Schoolhouse, continued

9:00am

- *Students arrive and are greeted by educator
- *Have their lunches placed inside the schoolhouse or on picnic tables
- *Gather students up in the grassy area and do a short wiggle break and then sit down

9:10am

- *Run through the rules they must follow during the day
- *Discuss the history of Rocky Branch One-Room Schoolhouse
- *Point out water pump and water faucet, then start tour of grounds-mainly outhouse and school bell

9:30am

- *Once inside pass around the photo of the students while taking attendance
- *Have a student volunteer to lead the group in the Pledge of Allegiance

9:45am

- *Lessons start-discuss sharing of school supplies, what writing tools were used
- *Have student volunteer pass out chalk while educator writes lesson on the board
- *Reading lesson

Preparing for Your Visit, continued

Typical Field Trip Schedule-Rocky Branch One-Room Schoolhouse, continued

9:45am, continued

- *Spelling, give them 3-5 minutes to work on the lesson
- *After spelling lesson, discussion of rules for students and teachers in one room schools, as well as student punishments
- *Spelling bee
- *Math lesson

10:50am

- *Lunch and recess discussion
- *Toy demonstration
- *Remind them of the rules they must follow

11:00am-11:20am

- *Lunch

11:20am-11:40am

- *Recess

11:40am

- *Have students check to make sure all trash and toys are picked up
- *Have students line up at bottom of stairs, then lead them inside

Preparing for Your Visit, continued

Typical Field Trip Schedule-Rocky Branch One-Room Schoolhouse, continued

11:50am

*A volunteer will gather chalk while another passes out paper

*Drinking water lesson & make a paper cup

12:10pm

*Remembrance books lesson and activity

12:40pm

*Students return to their seats

*Elocution (tongue twisters) activity

1:00pm

*A volunteer will gather the pencils

*Make sure the students straighten up their desks and gather all their things

*Class pictures

*Ring the bell

1:30pm

*Students depart



Thank You

Thank you for considering a field trip to the Rogers Historical Museum. We look forward to seeing you soon!

Ashley Sayers, Education Manager
Glen Christophersen, Education Assistant



Field Trip Notes

Field Trip Notes

Field Trip Notes

A series of horizontal blue lines spanning the width of the page, intended for writing field trip notes. The lines are evenly spaced and extend from the left edge of the page to the right edge.



ROGERS
HISTORICAL
MUSEUM

REAL. TRUE. FUN.

